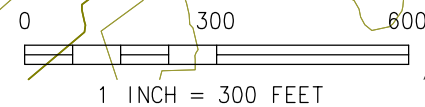
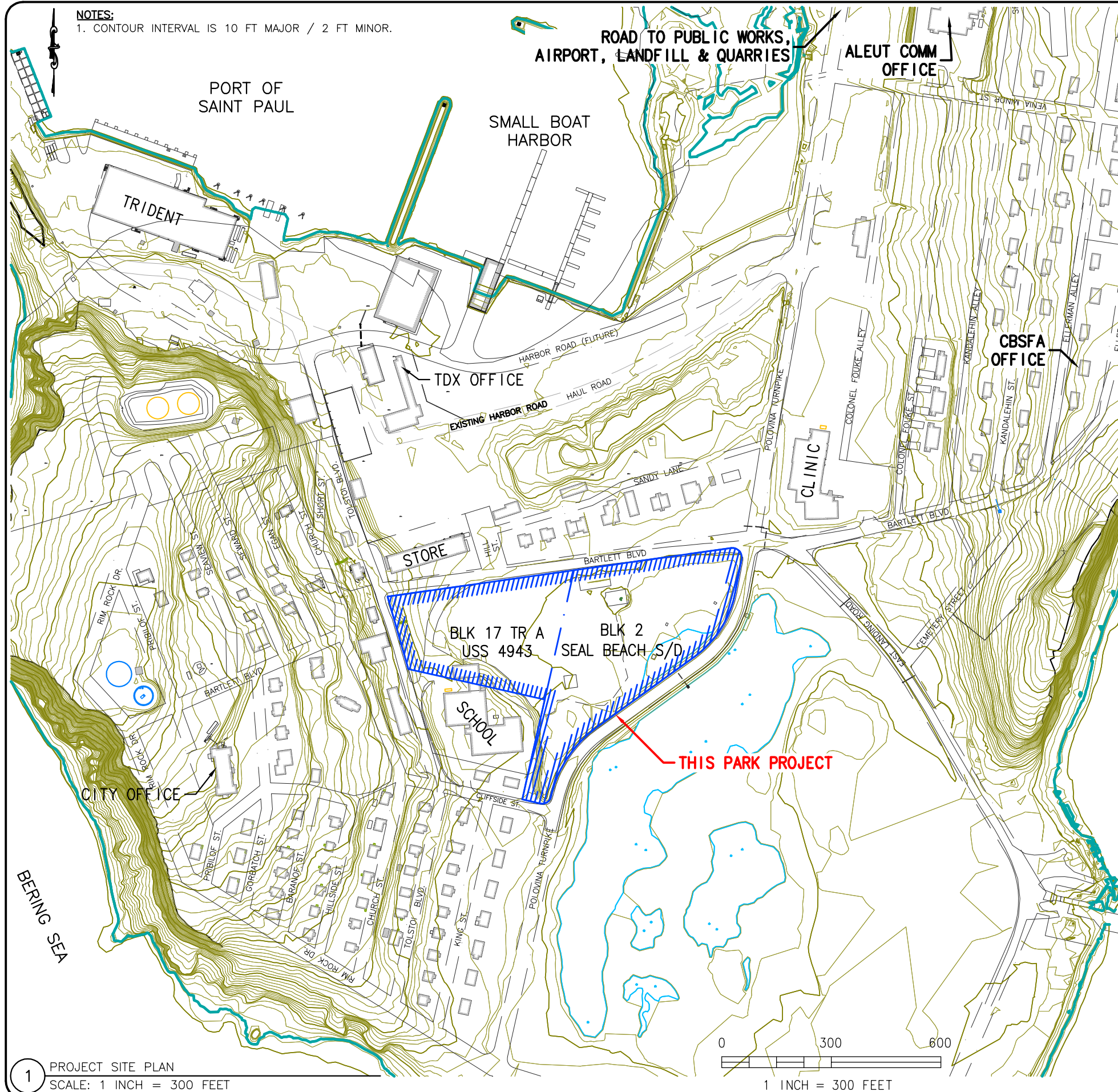


NOTES:
1. CONTOUR INTERVAL IS 10 FT MAJOR / 2 FT MINOR.



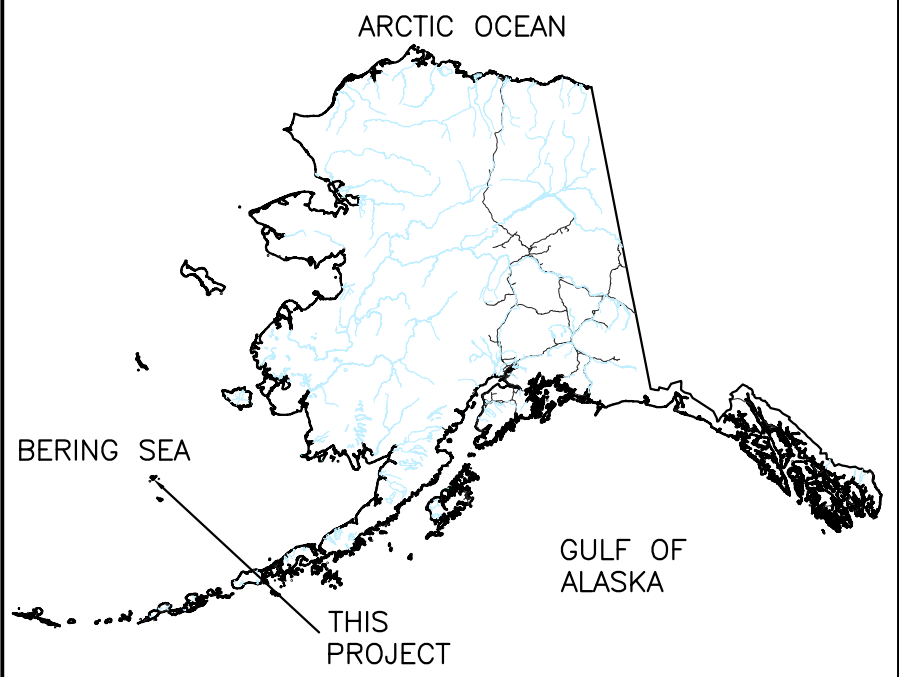
- DRAFT 3/3/2021 -

SCOPE OF WORK:

PROJECT CONSTRUCTS NEW COMMUNITY PARK SITE GRADING IMPROVEMENTS AND SITE DRAINAGE PROVISIONS.

SITE DRAINAGE FROM THE ADJACENT AREAS DIRECTED ACROSS THE SITE TO SEDIMENT POND AND THROUGH POLOVINA ROAD CULVERT TO THE POND AREA BEYOND.

PROJECT IS CONTAINED WITHIN BLOCK 17, TRACT A, USS 4943 AND BLOCK 2 SEAL BEACH SUBDIVISION (ARD PLAT #2013-21).



2 VICINITY MAP
SCALE: NTS

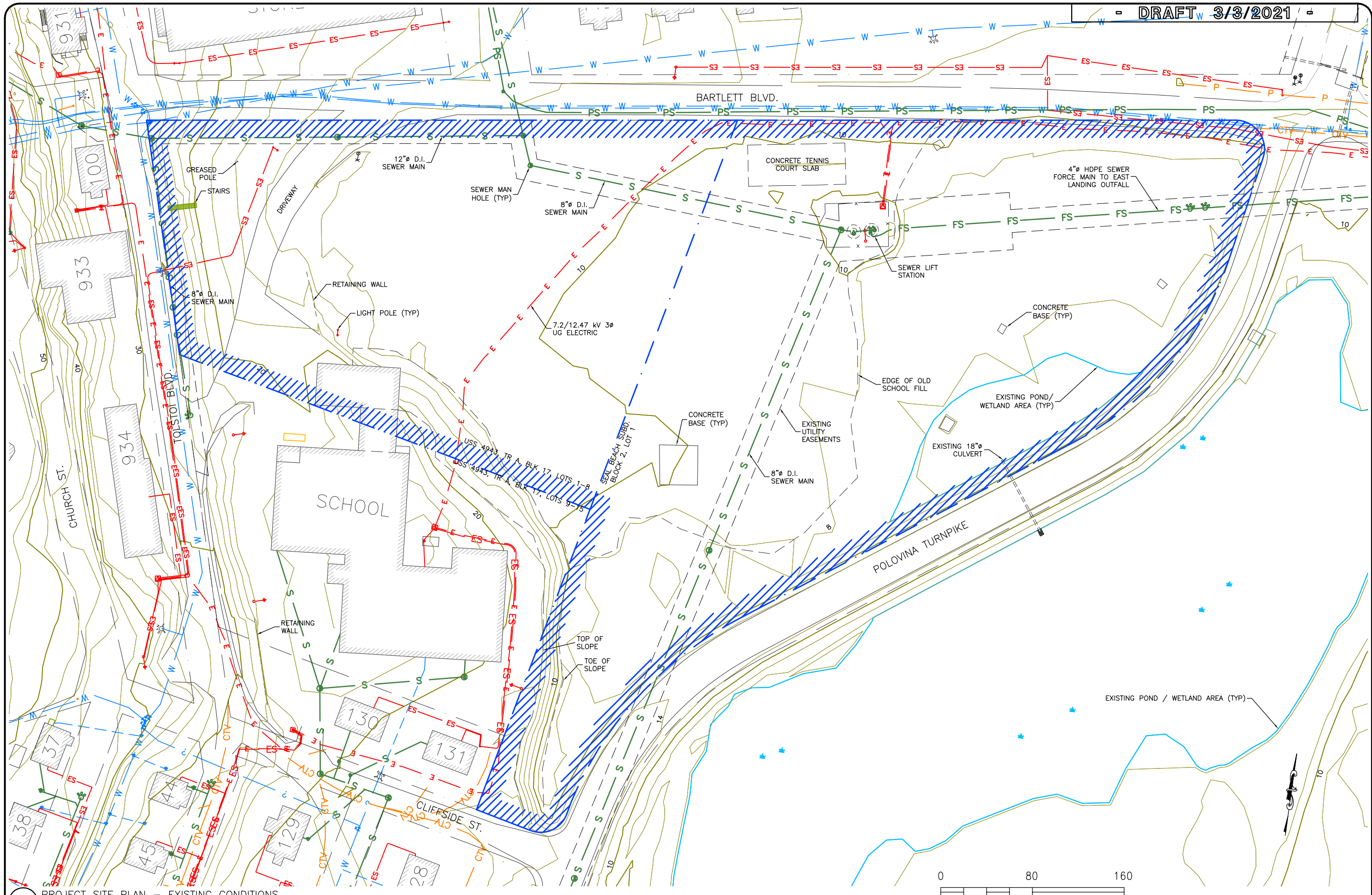
1 PROJECT SITE PLAN
SCALE: 1 INCH = 300 FEET

SHEET
C-1
OF

DRAWING
PROJECT
**ST. PAUL COMMUNITY PARK
BALLFIELD**
ST. PAUL, ALASKA

polarconsult alaska, inc.
ENERGY SYSTEMS • ENVIRONMENTAL SERVICES • ENGINEERING DESIGN
1503 WEST 33RD AVE, SUITE 310 PHONE (907) 258-2420
ANCHORAGE, ALASKA 99503 ABCC#985 FAX (907) 258-2419

DATE: 3/3/2021
DESIGNED: MD
DRAWN: JG
CHECKED: AsNoted
SCALE: AsNoted
FILE:SNPCommPar-k2021



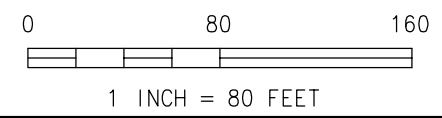
DRAWING SITE PLAN - EXISTING CONDITIONS

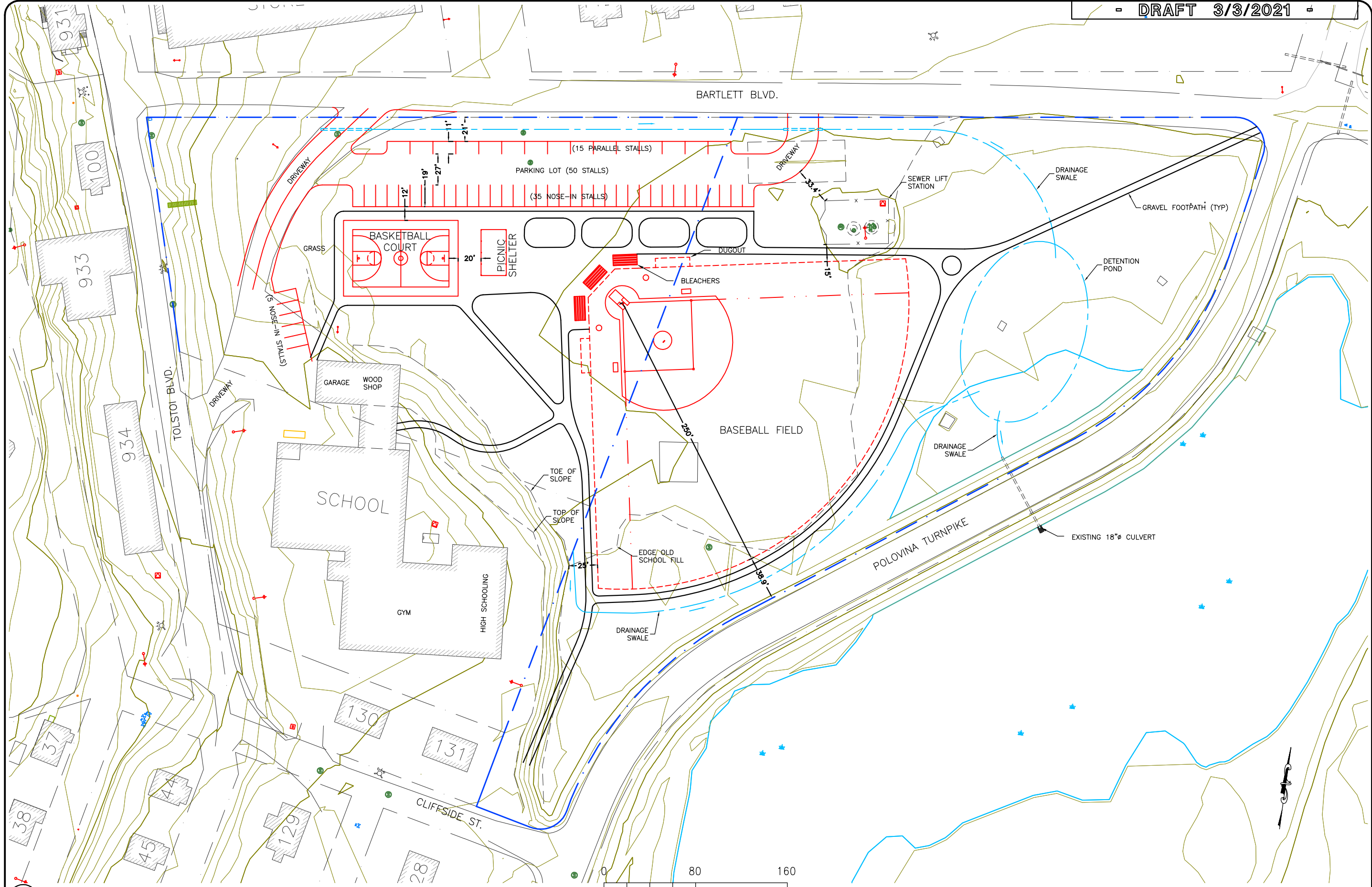
PROJECT
ST. PAUL COMMUNITY PARK
BALLFIELD
ST. PAUL, ALASKA

polarconsult alaska, inc.
ENERGY SYSTEMS • ENVIRONMENTAL SERVICES • ENGINEERING DESIGN
1503 WEST 33RD AVE, SUITE 310 PHONE (907) 258-2420
ANCHORAGE, ALASKA 99503 ABCC#985 FAX (907) 258-2419

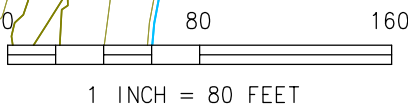
DATE: 3/3/2021
DESIGNED: MD
DRAWN: JG
CHECKED: AsNoted
SCALE: AsNoted
FILE: SNCompPark2021

1 PROJECT SITE PLAN - EXISTING CONDITIONS
SCALE: 1 INCH = 80 FEET





1 PROJECT SITE PLAN
SCALE: 1 INCH = 80 FEET



DATE: 3/3/2021
 DESIGNED: MD
 DRAWN: JG
 CHECKED: AsNoted
 SCALE: AsNoted
 FILE: \$NPCCompPar.k2021

DRAWING
 PARK SITE PLAN

polarconsult alaska, inc.
 ENERGY SYSTEMS • ENVIRONMENTAL SERVICES • ENGINEERING DESIGN
 1503 WEST 33RD AVE, SUITE 310 PHONE (907) 258-2420
 ANCHORAGE, ALASKA 99503 ABCC#985 FAX (907) 258-2419

PROJECT
 ST. PAUL COMMUNITY PARK
 BALLFIELD
 ST. PAUL, ALASKA

SHEET
C-5
 OF